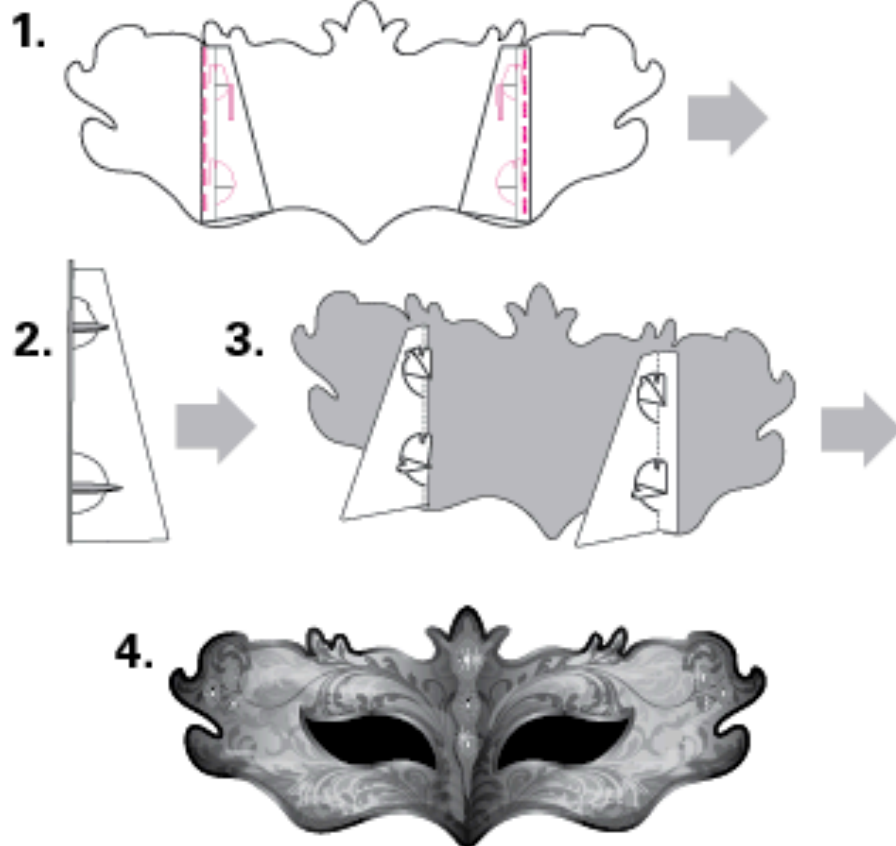
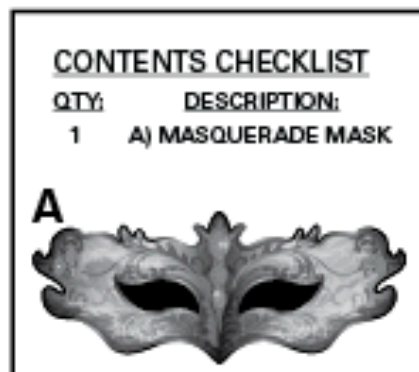


31/365 Masquerade Mask Standup Instructions

©2011 Oriental Trading Company, Inc.
OrientalTrading.com (800)228-2269



31/365 Masquerade Mask Standup Decoration

Simple Assembly Required:

1. Fold both stands on the back of easel (A) out for support.
2. Fold down the cardboard notches and lock into place.
3. Alternatively, the mask may be hung from ceiling or wall by suspending with fishing line (not supplied).

Fun Party Tips

1. Place the standup by the door to surprise your guests as they arrive for the party.
2. Use as a photo prop! Supply a variety of fun hats or costumes so guests can dress up and take a picture to remember all the fun!
3. Plan ahead! What other parties would a standup be great for? For a fun variety of party novelties check us out on the web at OrientalTrading.com