

13703863 Brick Party Centerpiece Instructions

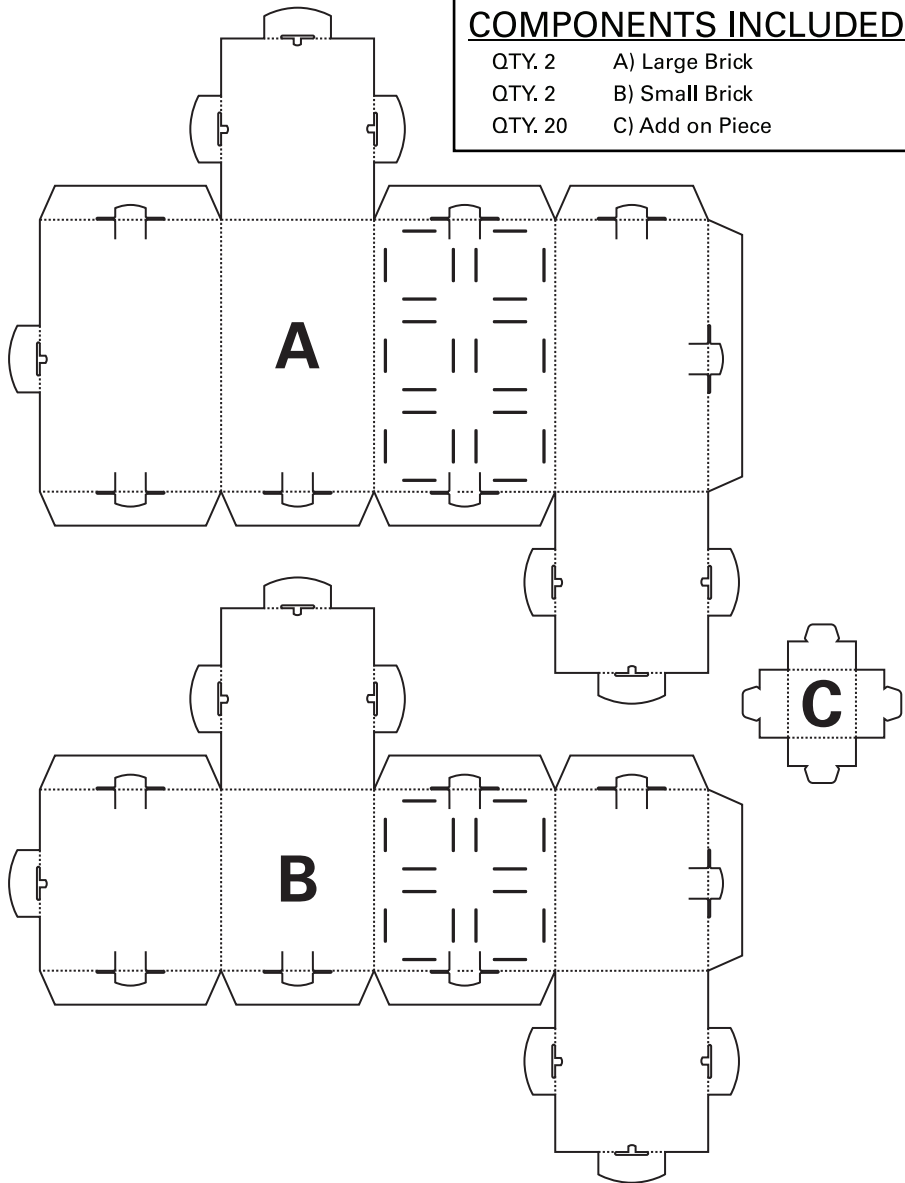
©2016 Oriental Trading Company, Inc.
OrientalTrading.com (800)-228-2269

BEFORE YOU BEGIN ASSEMBLY:

- Check that all materials are included in your kit.
- Please read through the instructions before you begin assembly.
- Make sure that your work area is spacious enough to assemble the item.
- Assembly time should be about 30 minutes for two people.

COMPONENTS INCLUDED

- | | |
|---------|-----------------|
| QTY. 2 | A) Large Brick |
| QTY. 2 | B) Small Brick |
| QTY. 20 | C) Add on Piece |



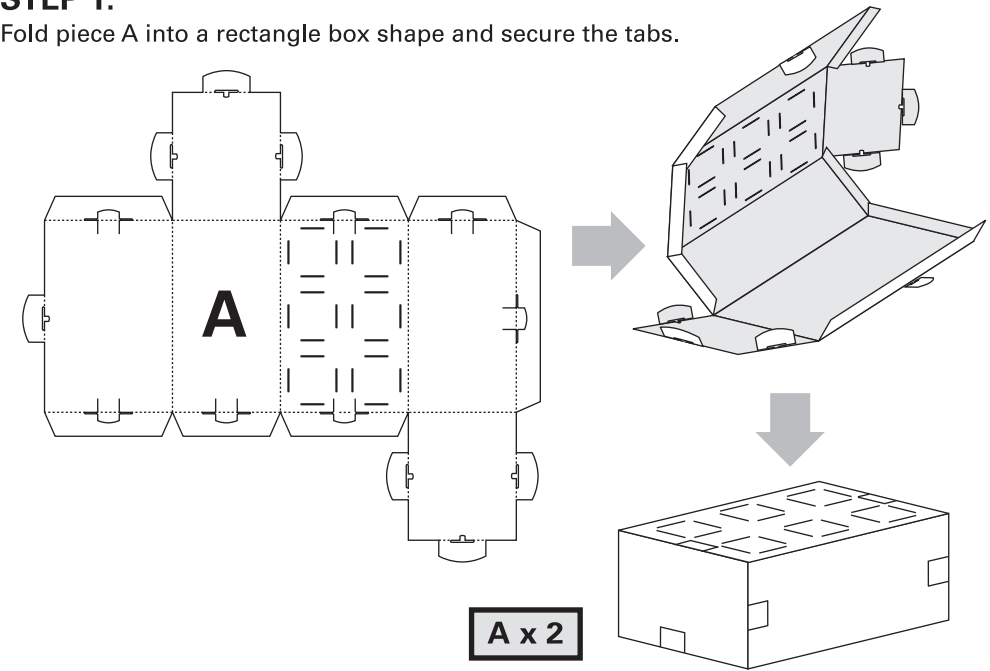
HELPFUL TIPS:

- When folding the pieces make sure the print is facing outward.
- Follow the diagram below to insert and close the tab openings.



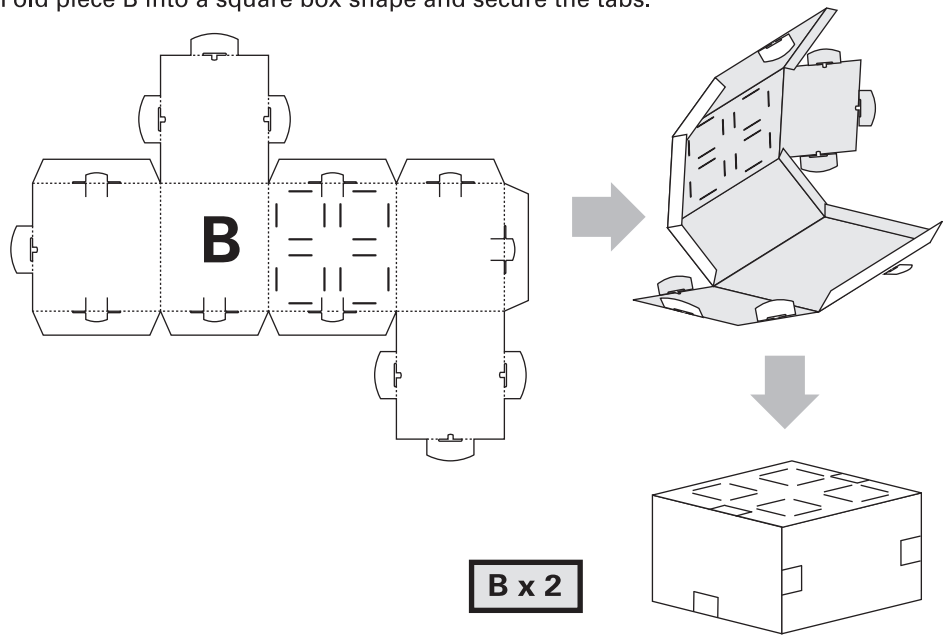
STEP 1:

Fold piece A into a rectangle box shape and secure the tabs.



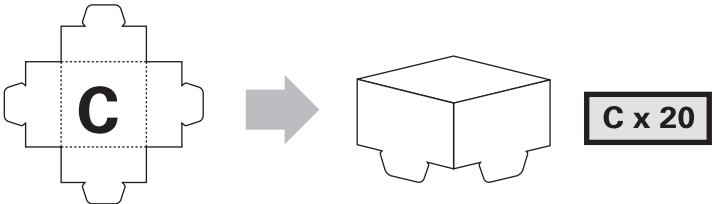
STEP 2:

Fold piece B into a square box shape and secure the tabs.



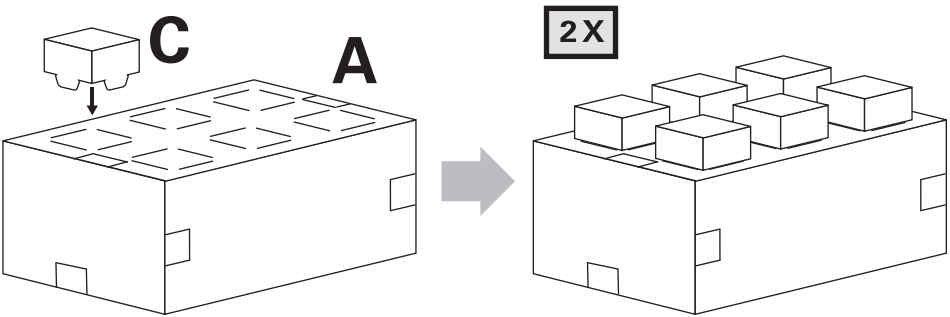
STEP 3:

Fold the sides of C downward.



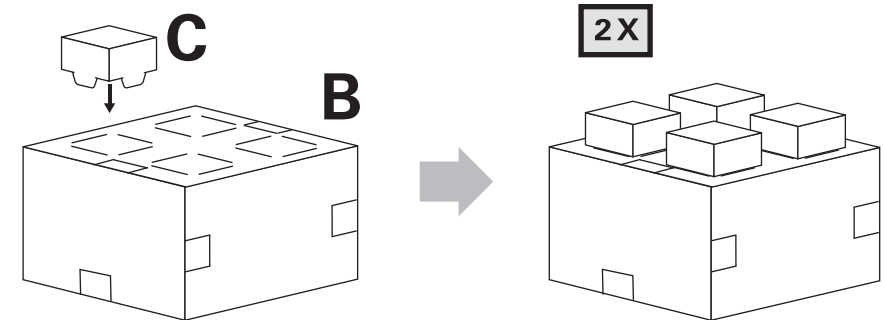
STEP 4:

Insert the tabs on the four sides of C into the top of A where the notches are shown below.



STEP 5:

Insert the tabs on the four sides of C into the top of B where the notches are shown below.



Your Brick Centerpieces are finished!

Have fun with your new Bricks!
Use them as display pieces or decorate with them
any way you would like!

